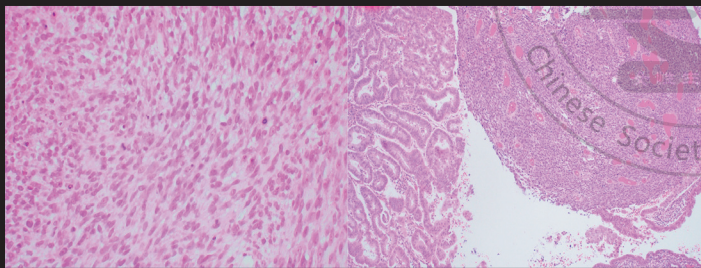


国际妇科病理学杂志(中文版)

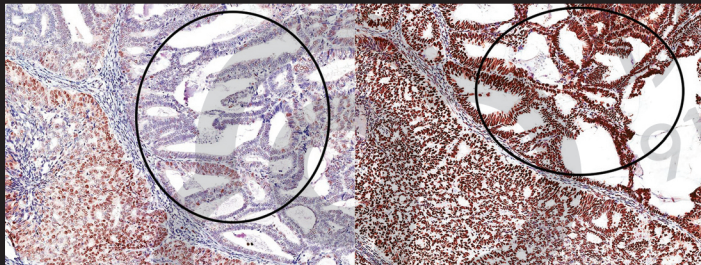
International Journal of Gynecological Pathology



未分化子宫内膜癌的肉瘤转化

by Katherine M. Vroobel and Ayoma D. Attygalle

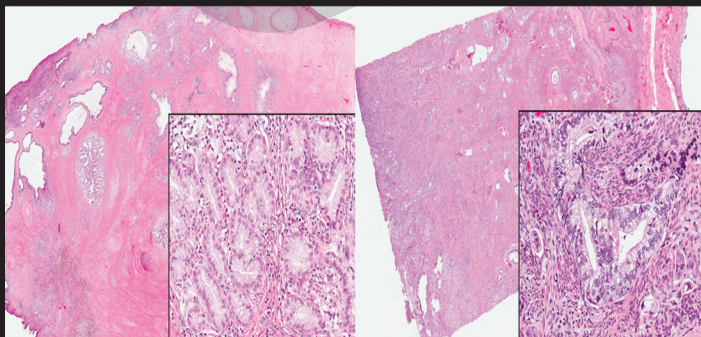
去/未分化癌的肉瘤转化现象至今尚未被正式报告过，这种转化现象也增加了误诊的可能性



子宫内膜癌中MSH6表达的多样化

by Nidhi Tandon et al.

MSH6在错配修复完好或因MLH1甲基化导致MLH1表达缺失的子宫内膜样癌中表达水平有很大波动，这种波动在考量患者是否适合免疫靶点阻滞治疗时可能更具参考意义



HPV相关和胃型宫颈腺癌的基因组特征

by Anjelica Hodgson et al.

对宫颈腺癌的全面分析揭示了分子突变图谱与病因学分型之间的相关性，对于复发或难治性宫颈腺癌，高通量测序可以作为一种具有预后和预测价值的临床检测手段

国际妇科病理学杂志(中文版)

International Journal of
Gynecological Pathology

2020年 • 第1卷 • 第4期

中文版编译委员会

名誉主编(姓氏拼音排序)

卞修武 郎景和

顾问组(姓氏拼音排序)

步宏 陈杰 陈晓端 丁华野 范钦和 孔北华 来茂德 李亚里 梁智勇 刘东戈
石怀银 魏丽惠 谢幸 张雅贤 周先荣 周晓军

海外专家组(姓氏拼音排序)

曹登峰 陈隆文 惠培 刘劲松 邢德印 杨斌 赵澄泉 郑文新 周倩

主编

刘爱军

副主编(姓氏拼音排序)

姜彦多 刘从容 孟元光 宁燕 沈丹华 吴小华 杨开选 张静 张丽华 张廷国

常务编委(姓氏拼音排序)

包磊 曹冬焱 陈飞 陈奎生 丁永玲 董颖 范文生 高洪文 蒋艳霞 孔为民
梁莉 刘易欣 卢朝辉 曲利娟 宋坤 隋龙 杨文涛 杨向红 尤志学 于晓红
张询 赵昀 郑洪 朱慧庭

编委名单(略)

青年编委名单(略)

本期执行主编

刘从容

本期执行编委(姓氏拼音排序)

毕学杰 陈莉 陈秋月 曹晓哲 丁永玲 郭晓静 何琼琼 胡丹

本期第一读者(姓氏拼音排序)

毕蕊 蔡玮 曹岚清 程彩霞 范林妮 高雪 官静 韩雯 黄文亭

编译部

主任:周晓军 常务副主任:王文杰 副主任:王昀

学术联络部

狄峰 盖魏全 沈彬

International Journal of Gynecological Pathology 中文版版权说明

© 2020 Wolters Kluwer Health

This material is from Wolters Kluwer Health, and authorize to 91360 Medical Group (Shen Zhen) Co., Ltd freely distribute such material to medical professionals. No part of this material may be reproduced in any form, stored in a retrieval system or transmitted in any form, by any means.

Opinions expressed in this material are not necessarily those of Wolters Kluwer or associates. No responsibility is assumed by Wolters Kluwer or associates, for any injury and/or damage to persons or property as a matter of products liability, negligence or otherwise, or operation of any methods, products, instructions, or ideas contained in the material. Because of rapid advances in the medical sciences, in particular, independent verification of diagnoses and drug dosages should be made.

本中文版由Wolters Kluwer Health授权91360医生集团医疗(深圳)有限公司翻译以及向医疗专业人员分发。本中文版的任何部分不得以任何形式复制、储存在检索系统中或以任何形式以任何方式传播。

本中文版中表达的观点不一定是Wolters Kluwer或其同事的观点。Wolters Kluwer或其合伙人不承担因产品责任、疏忽或其他原因,或材料中包含的任何方法、产品、说明或想法的操作而对人身或财产造成的任何伤害和/或损害的责任。特别是医学科学的迅速发展,需要对诊断和药物剂量进行独立的验证。

International Journal of Gynecological Pathology

OFFICIAL JOURNAL OF THE INTERNATIONAL SOCIETY OF
GYNECOLOGICAL PATHOLOGISTS

Editor-in-Chief

Lora Hedrick Ellenson, M.D.

Attending Pathologist, Director of Gynecologic Pathology
Memorial Sloan Kettering Cancer Center
1275 York Avenue, A-526
New York, NY 10065
Tel: (212)639-8757; Fax (929)321-5015
E-mail: ellensol@mskcc.org

Associate Editors

Kathleen R. Cho
Ann Arbor, Michigan
North America

Jaime Prat
Barcelona, Spain
Europe

Kay J. Park
New York, New York
Digital Content and Social Media

Joseph Thomas Rabban III
San Francisco, California
Reviews and Collections

Robert H. Young
Boston, Massachusetts
Historical Essays

Editorial Board

Fadi W. Abdul-Karim
Cleveland, Ohio

Jorge Albores-Saavedra
Tlalpan, Mexico D.F.

Jan P. A. Baak
Stavanger, Norway

Rebecca N. Baergen
New York, New York

Debra A. Bell
Rochester, Minnesota

Charles Biscotti
Cleveland, Ohio

Russell R. Broaddus
Chapel Hill, North Carolina

Natalia Buza
New Haven, Connecticut

Silvestro G. Carinelli
Milan, Italy

Diego H. Castrillón
Dallas, Texas

Joanna S. Chan
Philadelphia, Pennsylvania

Terence J. Colgan
Toronto, Canada

Kumarasen Cooper
Philadelphia, Pennsylvania

Bernard Czernobilsky
Tel-Aviv, Israel

David J. Dabbs
Honolulu, Hawaii

Gisela Dallenbach-Hellweg
Mannheim, Germany

Joachim Diebold
Lucerne, France

Oluwole Fadare
San Diego, California

Blake Gilks
Vancouver, Canada

Steffen Hauptmann
Düren, Germany

Jonathan L. Hecht
Boston, Massachusetts

C. Simon Herrington
St. Andrews, Scotland

Pei Hui
New Haven, Connecticut

Philip Pun Ching Ip
Hong Kong SAR, China

Julie Irving
Victoria, Canada

Elke Jarboe
Salt Lake City, Utah

Hidetaka Katabuchi
Kumamoto, Japan

Takako Kiyokawa
Tokyo, Japan

Friedrich Kommoss
Friedrichshafen, Germany

Christina Kong
Stanford, California

Sigurd Lax
Graz, Austria

Cheng-Han Lee
Vancouver, Canada

Teri A. Longacre
Stanford, California

Anais Malpica
Houston, Texas

Xavier Matias-Guiu
Lleida, Spain

Glenn W. G. McCluggage
Belfast, Northern Ireland

Khush Mittal
New York, New York

George L. Mutter
Boston, Massachusetts

Francisco Nogales
Granada, Spain

Marisa R. Nucci
Boston, Massachusetts

Esther Oliva
Boston, Massachusetts

José Palacios
Sevilla, Spain

Vinita Parkash
New Haven, Connecticut

Stanley J. Robboy
Durham, North Carolina

Michael H. Roh
Rochester, Minnesota

Brigitte M. Ronnett
Baltimore, Maryland

Hironobu Sasano
Sendai, Japan

Neil J. Sebire
London, United Kingdom

Jeffrey D. Seidman
Silver Spring, MD

Patricia A. Shaw
Toronto, Canada

Mark E. Sherman
Jacksonville, Florida

le-Ming Shih
Baltimore, Maryland

Elvio G. Silva
Houston, Texas

Robert A. Soslow
New York, New York

Paul N. Staats
Baltimore, Maryland

Annette Staebler
Tuebingen, Germany

Mark H. Stoler
Charlottesville, Virginia

Thomas M. Ulbright
Indianapolis, Indiana

Russell Vang
Baltimore, Maryland

David C. Wilbur
Boston, Massachusetts

Edward J. Wilkinson
Gainesville, Florida

T.-C. Wu
Baltimore, Maryland

Anna Yemelyanova
Birmingham, Alabama

Gian Franco Zannoni
Rome, Italy

Wenxin Zheng
Dallas, Texas

Former Editors-in-Chief

Ancl Blaustein 1981–1984 Steven G. Silverberg 1984–1991 Henry J. Norris 1991–1994 Philip B. Clement 1994–2004 Mark H. Stoler 2004–2014

目录

全文

- 01 在错配修复功能完整或MLH1甲基化导致MLH1缺失的子宫内膜癌中MSH6具有多样化的表达
Variable Expression of MSH6 in Endometrial Carcinomas With Intact Mismatch Repair and With MLH1 Loss Due to MLH1 Methylation
- 08 外阴癌外科手术切缘的测量和报告实践指南
Practical Guidance for Measuring and Reporting Surgical Margins in Vulvar Cancer
- 15 去/未分化子宫内膜癌的肉瘤转化:一个认识不足的现象及诊断陷阱
Sarcomatous Transformation in Undifferentiated/Dedifferentiated Endometrial Carcinoma: An Underrecognized Phenomenon and Diagnostic Pitfall
- 22 HPV相关型及胃型宫颈腺癌的基因组特征:与亚型和临床行为的相关性
Genomic Characterization of HPV-related and Gastric-type Endocervical Adenocarcinoma: Correlation With Subtype and Clinical Behavior
- 31 外阴、阴道和尿道原发黑色素瘤的基因突变谱:聚焦于肿瘤原发部位的37个病例回顾性研究
Mutational Profile in Vulvar, Vaginal, and Urethral Melanomas: Review of 37 Cases With Focus on Primary Tumor Site

摘要

- 39 宫颈低分化鳞状细胞癌中PD-L1的表达与年龄小及CD8+的TIL密度相关
PD-L1 Expression Correlates With Young Age and CD8 + TIL Density in Poorly Differentiated Cervical Squamous Cell Carcinoma

目录

- 42 MELF浸润方式在IECC分类宫颈浸润性腺癌(ECA)中的临床病理联系及预后价值
Clinicopathologic Association and Prognostic Value of MELF Pattern in Invasive Endocervical Adenocarcinoma (ECA) as Classified by IECC
- 45 青少年卵巢类固醇细胞肿瘤伴VHL综合征:个案报道并文献复习
Ovarian Steroid Cell Tumor in an Adolescent With Von Hippel-Lindau Syndrome: A Case Report and Review of the Literature
- 48 起源于畸胎瘤的卵巢原发性具有Merkel细胞样免疫表型的高级别神经内分泌癌
Primary Ovarian High-grade Neuroendocrine Carcinoma With Merkel Cell-like Immunophenotype Arising in a Teratoma
- 50 子宫内膜癌患者术前宫颈细胞学检查发现腺细胞与术后局部复发的相关性
Presence of Glandular Cells at the Preoperative Cervical Cytology and Local Recurrence in Endometrial Cancer
- 53 PNL2: 与HMB45相比一个在诊断子宫血管周围上皮样细胞瘤(PEComa)中同样有用的生物标志物
PNL2: A Useful Adjunct Biomarker to HMB45 in the Diagnosis of Uterine Perivascular Epithelioid Cell Tumor (PEComa)
- 57 基于内膜活检标本的子宫内膜癌ProMisE分子分型室间一致性评价
Interlaboratory Concordance of ProMisE Molecular Classification of Endometrial Carcinoma Based on Endometrial Biopsy Specimens
- 61 卵巢高级别浆液性癌中免疫检控点相关分子LAG-3和PD-L1的表达:与肿瘤相关淋巴细胞和胚系BRCA状态的相关性
Expression of the Immune Checkpoints LAG-3 and PD-L1 in High-grade Serous Ovarian Carcinoma: Relationship to Tumor-associated Lymphocytes and Germline BRCA Status