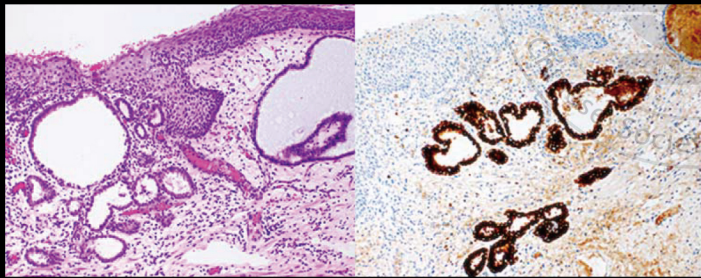


国际妇科病理学杂志(中文版)

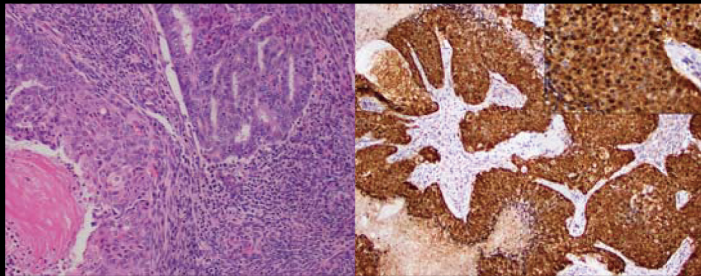
International Journal of Gynecological Pathology



宫颈透明细胞癌的前驱病变:来源于输卵管-子宫内膜化生的证据

Karen L. Talia et al.

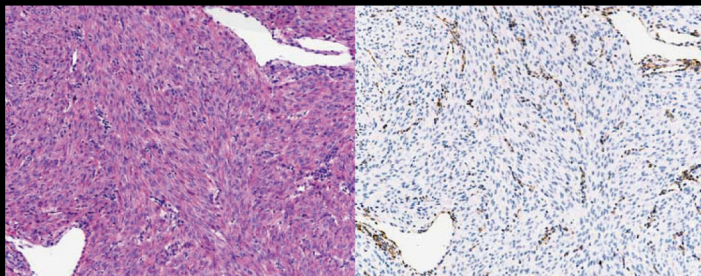
报告了8例散发性宫颈CCC, 所有肿瘤都显示附近有TEM, 部分病例TEM显示轻度细胞异型性, 推测可能与肿瘤前驱病变相关



伴 β -catenin弥漫异常表达的FIGO 3级子宫内膜样腺癌:一种类似皮肤毛母质癌的侵袭性亚型

Paul Weisman et al.

报道了5例伴不同高级别分化的子宫内膜样腺癌, 其形态和免疫表型与皮肤毛母质癌具有显著相似性, 就诊时常已发生远处转移



宫体和宫外恶性潜能未定的平滑肌肿瘤的鉴别诊断应考虑到延胡索酸水合酶表达缺失型平滑肌瘤

Jennifer Pors et al.

dFH子宫肌瘤可能被错误地归类为恶性潜能未定的平滑肌瘤, FH表达缺失则支持为dFH平滑肌瘤, 并有助于识别出具有遗传性平滑肌瘤病和肾细胞癌高患病风险的患者

国际妇科病理学杂志(中文版)

International Journal of Gynecological Pathology

2022年06月 第3卷 第2期

中文版编译委员会

名誉主编

下修武 郎景和

顾问组(姓氏拼音排序)

步宏 陈杰 陈晓端 丁华野 范钦和 孔北华 来茂德 李亚里 梁智勇 刘东戈 石怀银 宋磊 魏丽惠
谢幸 张雅贤 周先荣 周晓军

海外专家组(姓氏拼音排序)

曹登峰 陈隆文 惠培 刘劲松 邢德印 杨斌 赵澄泉 郑文新 周倩

主编

刘爱军

副主编(姓氏拼音排序)

姜彦多 刘从容 孟元光 宁燕 沈丹华 吴小华 杨开选 张静 张丽华 张廷国

常务编委(姓氏拼音排序)

包磊 曹冬焱 陈飞 陈奎生 丁永玲 董颖 范文生 高洪文 蒋艳霞 孔为民 梁莉 刘易欣 卢朝辉
曲利娟 宋坤 隋龙 杨文涛 杨向红 尤志学 于晓红 张询 赵昀 郑洪 朱慧庭

编委名单(姓氏拼音排序)

毕学杰 曹晓哲 陈莉 陈琼荣 陈秋月 郭晓静 何琼琼 胡丹 胡余昌 黄恒 黄向华 江庆萍 江炜
金华 金玉兰 李红 李丽 李双 李素红 李艳春 林凡忠 刘军 刘岩 刘洋 路喜安 吕炳建
马毓梅 孟刚 申彦 沈勤 生秀杰 师晓华 陶祥 涂小予 王彬 王果元 王文杰 王昀 翁海燕
吴煊文 徐祎 俞文英 张金库 张雷 郑兴征 钟艳平

青年编委名单(姓氏拼音排序)

毕蕊 蔡玮 曹岚清 陈琴 程彩霞 范林妮 高雪 官静 韩雯 黄邦杏 黄文亨 蒋依娜 李静
李娟 李雷 李美平 李明珠 林洁 林静 卢珊珊 吕京浓 明健 磨娜 宋艳 王爱春 王利群
王强 王艳 魏建国 武杰 闫志凤 杨雯 杨 彪 易小芳 张玲玲 张晓波 张晓芳 周晓峰

本期执行主编

张廷国

本期执行编委(姓氏拼音排序)

曹晓哲 胡丹 江炜 金华 蒋艳霞 梁莉 于晓红 郑洪

本期第一读者(姓氏拼音排序)

蔡玮 曹岚清 陈琴 高丽芳 杜禹 黄邦杏 马紫瑜 张晓波 张晓芳

编译部

主任:周晓军 常务副主任:王文杰 副主任:王昀

学术联络部

狄峰



International Journal of Gynecological Pathology 中文版版权说明

© 2022 Wolters Kluwer Health

This material is from Wolters Kluwer Health, and authorize to 91360 Medical Group (Shen Zhen) Co., Ltd freely distribute such material to medical professionals. No part of this material may be reproduced in any form, stored in a retrieval system or transmitted in any form, by any means.

Opinions expressed in this material are not necessarily those of Wolters Kluwer or associates. No responsibility is assumed by Wolters Kluwer or associates, for any injury and/or damage to persons or property as a matter of products liability, negligence or otherwise, or operation of any methods, products, instructions, or ideas contained in the material. Because of rapid advances in the medical sciences, in particular, independent verification of diagnoses and drug dosages should be made.

本中文版由Wolters Kluwer Health授权91360医生集团医疗(深圳)有限公司翻译以及向医疗专业人员分发。本中文版的任何部分不得以任何形式复制、储存在检索系统中或以任何形式以任何方式传播。

本中文版中表达的观点不一定是Wolters Kluwer或其同事的观点。Wolters Kluwer或其合伙人不承担因产品责任、疏忽或其他原因,或材料中包含的任何方法、产品、说明或想法的操作而对人身或财产造成的任何伤害和/或损害的责任。特别是医学科学的迅速发展,需要对诊断和药物剂量进行独立的验证。

如发现本刊有印装质量问题,可向编辑部联系调换 ☎ 40004-91360

International Journal of Gynecological Pathology

OFFICIAL JOURNAL OF THE INTERNATIONAL SOCIETY OF
GYNECOLOGICAL PATHOLOGISTS

EDITOR-IN-CHIEF

Lora Hedrick Ellenson, M.D.

Attending Pathologist, Director of Gynecologic Pathology
Memorial Sloan Kettering Cancer Center
1275 York Avenue, A-526
New York, NY 10065
Tel: (212)639-8757; Fax (929)321-5015
E-mail: ellensol@mskcc.org

ASSOCIATE EDITORS

Kathleen R. Cho
Ann Arbor, Michigan
North America

Jaime Prat
Barcelona, Spain
Europe

Kay J. Park
New York, New York
Digital Content and Social Media

Joseph Thomas Rabban III
San Francisco, California
Reviews and Collections

Robert H. Young
Boston, Massachusetts
Historical Essays

EDITORIAL BOARD

Fadi W. Abdul-Karim
Cleveland, Ohio

Jorge Albores-Saavedra
Tlalpan, Mexico D.F.

Rebecca N. Baergen
New York, New York

Debra A. Bell
Rochester, Minnesota

Jennifer A. Bennett
Chicago, Illinois

Russell R. Broaddus
Chapel Hill, North Carolina

Natalia Buza
New Haven, Connecticut

Silvestro G. Carinelli
Milan, Italy

Diego H. Castrillón
Dallas, Texas

Joanna S. Chan
Philadelphia, Pennsylvania

Sarah Chiang
New York, New York

Terence J. Colgan
Toronto, Canada

Kumarasen Cooper
Philadelphia, Pennsylvania

Bernard Czernobilsky
Tel-Aviv, Israel

David J. Dabbs
Honolulu, Hawaii

Gisela Dallenbach-Hellweg
Mannheim, Germany

Joachim Diebold
Lucerne, France

Bojana Djordjevic
Toronto, Canada

Oluwole Fadare
San Diego, California

Blake Gilks
Vancouver, Canada

Steffen Hauptmann
Düren, Germany

Jonathan L. Hecht
Boston, Massachusetts

C. Simon Herrington
St. Andrews, Scotland

Lynn Hoang
Vancouver, Canada

Brooke Howitt
Stanford, California

Pei Hui
New Haven, Connecticut

Philip Pun Ching Ip
Hong Kong SAR, China

Elke Jarboe
Salt Lake City, Utah

Hidetaka Katabuchi
Kumamoto, Japan

Takako Kiyokawa
Tokyo, Japan

Martin Koebel
Calgary, Canada

Friedrich Kommoss
Friedrichshafen, Germany

Christina Kong
Stanford, California

Ricardo Lastra
Chicago, Illinois

Sigurd Lax
Graz, Austria

Cheng-Han Lee
Vancouver, Canada

Teri A. Longacre
Stanford, California

Anais Malpica
Houston, Texas

Xavier Matias-Guiu
Lleida, Spain

Glenn W. G. McCluggage
Belfast, Northern Ireland

Anne M. Mills
Charlottesville, Virginia

Khush Mittal
New York, New York

George L. Mutter
Boston, Massachusetts

Francisco Nogales
Granada, Spain

Marisa R. Nucci
Boston, Massachusetts

Esther Oliva
Boston, Massachusetts

José Palacios
Sevilla, Spain

Vinita Parkash
New Haven, Connecticut

Carlos Parra-Herran
Boston, Massachusetts

Stanley J. Robboy
Durham, North Carolina

Michael H. Roh
Rochester, Minnesota

Brigitte M. Ronnett
Baltimore, Maryland

Hironobu Sasano
Sendai, Japan

Neil J. Sebire
London, United Kingdom

Jeffrey D. Seidman
Silver Spring, MD

Patricia A. Shaw
Toronto, Canada

Mark E. Sherman
Jacksonville, Florida

le-Ming Shih
Baltimore, Maryland

Elvio G. Silva
Houston, Texas

Naveena Singh
London, England

Robert A. Soslow
New York, New York

Paul N. Staats
Baltimore, Maryland

Annette Staebler
Tuebingen, Germany

Mark H. Stoler
Charlottesville, Virginia

Thomas M. Ulbright
Indianapolis, Indiana

Russell Vang
Baltimore, Maryland

David C. Wilbur
Boston, Massachusetts

T.-C. Wu
Baltimore, Maryland

Anna Yemelyanova
New York, New York

Gian Franco Zannoni
Rome, Italy

Wenxin Zheng
Dallas, Texas

FORMER EDITORS-IN-CHIEF

ANCEL BLAUSTEIN 1981–1984 STEVEN G. SILVERBERG 1984–1991 HENRY J. NORRIS 1991–1994 PHILIP B. CLEMENT 1994–2004 MARK H. STOLER 2004–2014



目录

全文

- 01 宫颈透明细胞癌的前驱病变:来源于输卵管-子宫内膜化生的证据
Precursor Lesions of Cervical Clear Cell Carcinoma: Evidence For Origin From Tubo-Endometrial Metaplasia
- 09 伴 β -catenin弥漫异常表达的FIGO 3级子宫内膜样腺癌:一种类似皮肤毛母质癌的侵袭性亚型
FIGO Grade 3 Endometrioid Adenocarcinomas With Diffusely Aberrant β -Catenin Expression: An Aggressive Subset Resembling Cutaneous Pilomatrix Carcinomas
- 15 子宫内膜非典型增生/子宫内膜样癌患者经孕激素治疗后的子宫内膜活检报告调研
Survey on Reporting of Endometrial Biopsies From Women on Progestogen Therapy for Endometrial Atypical Hyperplasia/Endometrioid Carcinoma
- 24 复发和未复发的低级别低分期子宫内膜癌的分子评估
Molecular Evaluation of Low-grade Low-stage Endometrial Cancer With and Without Recurrence
- 36 宫体和宫外恶性潜能未定的平滑肌肿瘤的鉴别诊断应考虑到延胡索酸水合酶表达缺失型平滑肌瘤
Fumarate Hydratase Deficiency Should be Considered in the Differential Diagnosis of Uterine and Extrauterine Smooth Muscle Tumors of Uncertain Malignant Potential (STUMP)

摘要

- 44 免疫检查点抑制剂LAG-3及其配体GAL-3在外阴鳞状上皮肿瘤中的作用
The Immune Checkpoint Inhibitor LAG-3 and Its Ligand GAL-3 in Vulvar Squamous Neoplasia

目录

- 47 胎盘通过子宫肌瘤切除瘢痕侵入小肠: 病例报告并文献复习
Placental Invasion into the Small Bowel Intestine Through a Myomectomy Scar:
A Case Report With Literature Review 女性生殖学组
- 50 卵巢透明细胞癌预后和诊疗生物标志物的研究
Prognostic and Theranostic Biomarkers in Ovarian Clear Cell Carcinoma
- 56 WT1阳性的卵巢子宫内膜样肿瘤: 会诊病例的观察及与浆液性肿瘤鉴别策略
WT1 Positive Ovarian Endometrioid Tumors: Observations From Consult Cases and Strategies
for Distinguishing From Serous Neoplasms
- 61 PAX7是女性生殖道横纹肌肉瘤骨骼肌分化和伴有横纹肌肉瘤分化的肿瘤的敏感标志物
PAX7 Is a Sensitive Marker of Skeletal Muscle Differentiation in Rhabdomyosarcoma and Tumors
With Rhabdomyosarcomatous Differentiation in the Female Genital Tract
- 65 伴性索样分化和PHF1-JAZF1融合基因缺失的低级别子宫内膜间质肉瘤: JAZF1荧光原位杂交的诊断陷阱
Low-grade Endometrial Stromal Sarcoma With Sex Cord-like Differentiation and PHF1-JAZF1
Fusion With Deletions: A Diagnostic Pitfall of JAZF1 FISH
- 68 起源于卵巢Brenner瘤的低级别基底样癌: 一种新的恶性Brenner肿瘤变异型
Ovarian Low-grade Basaloid Carcinoma Arising in Brenner Tumor: A New Variant of
Malignant Brenner Tumor
- 73 p53/CK17双染色提高了鉴别分化型外阴上皮内肿瘤及其相似疾病的准确性
p53/CK17 Dual Stain Improves Accuracy of Distinction Between Differentiated Vulvar
Intraepithelial Neoplasia and Its Mimics